

# MORRILL MIDDLE SCHOOL EXTERIOR DOOR REPLACEMENTS

ARCHITECT

**FLATLEY**  
**DESIGN**  
**PLANNING**  
**MANAGEMENT**

## ADMINISTRATIVE REQUIREMENTS

- 1 ADDENDA MUST BE SIGNED BY ARCHITECT AND APPROVED BY DSA
- 2 NO CHANGES OR REVISIONS SHALL BE MADE FOLLOWING WRITTEN APPROVAL WHICH AFFECTS ACCESS COMPLIANCE ITEM UNLESS SUCH CHANGES TO REVISIONS ARE SUBMITTED TO DSA FOR APPROVAL.
- 3 SUBSTITUTIONS AFFECTING DSA REGULATED ITEMS SHALL BE SUBMITTED AS A CONSTRUCTION CHANGE DOCUMENT OR ADDENDA, AND SHALL BE APPROVED BY DSA PRIOR TO FABRICATION AND INSTALLATION.
- 4 CONSTRUCTION CHANGE DOCUMENTS MUST BE SIGNED BY THE FOLLOWING:  
ARCHITECT OR ENGINEER OF RECORD  
STRUCTURAL ENGINEER (WHEN APPLICABLE)  
DELEGATED PROFESSIONAL ENGINEER  
DSA
- 5 MATERIALS AND THEIR INSTALLATIONS SHALL COMPLY WITH APPLICABLE CODES.
- 6 PER CBC 11B-104.1 "ALL DIMENSIONS ARE SUBJECT TO CONVENTIONAL INDUSTRY TOLERANCES EXCEPT WHERE THE REQUIREMENT IS STATED AS A RANGE WITH SPECIFIC MINIMUM AND MAXIMUM END POINTS.
- 7 CONTRACTOR SHALL SUBMIT VERIFIED REPORT PER SECTION 4-336 AND 4-343 (c)ADMINISTRATION OF CONSTRUCTION PER PART I, TITLE 24, C.C.R.  
A. DUTIES OF ARCHITECT, STRUCTURAL ENGINEER, OR PROFESSIONAL ENGINEER PER SECTION 4-333 (a) AND 4-341  
B. DUTIES OF CONTRACTOR PER SECTION 4-336  
C. VERIFIED REPORTS PER SECTION 4-336
- 8 A COPY OF PART THRU 5 OF TITLE 24 SHALL BE KEPT AND AVAILABLE IN THE FIELD DURING CONSTRUCTION. PROJECT SHALL COMPLY WITH PARTS 1 THRU 6 AND 9 OF TITLE 24
- 9 DSA SHALL BE NOTIFIED ON START OF CONSTRUCTION PER SECTION 4-331
- 10 SUPERVISION BY DSA PER SECTION 4-343
- 11 DSA IS NOT SUBJECT TO ARBITRATION
- 12 CHANGES TO THE APPROVED DRAWINGS AND SPECIFICATIONS SHALL BE MADE BY ADDENDA OR CHANGE ORDER, TO BE APPROVED BY DSA AS REQUIRED BY SECTION 4-338, PART 1, TITLE 24, C.C.R.
- 13 A PROJECT INSPECTOR, EMPLOYED BY THE OWNER, AND APPROVED BY THE DIVISION-3 DSA, SHALL PROVIDE CONTINUOUS INSPECTION OF THE WORK, AS REQUIRED BY DSA. THE DUTIES OF THE INSPECTOR ARE DEFINED IN SECTION 4-342, PART 1, TITLE-24 C.C.R.

## APPLICABLE CODES

- |      |  |
|------|--|
| 2019 | CALIFORNIA ADMINISTRATIVE CODE, PART 1, TITLE 24 C.C.R.  |
| 2019 | CALIFORNIA BUILDING CODE (CBC), PART 2, TITLE 24, C.C.R. (2018 INTERNATIONAL BUILDING CODE, VOLUMES 1 AND 2, WITH 2019 CALIFORNIA AMENDMENTS.)                                   |
| 2019 | CALIFORNIA ELECTRIC CODE (CEC), PART 3, TITLE 24, C.C.R. (2018 NATIONAL ELECTRIC CODE WITH 2019 CALIFORNIA AMENDMENTS).  |
| 2019 | CALIFORNIA MECHANICAL CODE (CMC), PART 4, TITLE 24, C.C.R. (2018 UNIFORM MECHANICAL CODE WITH 2019 CALIFORNIA AMENDMENTS).   |
| 2019 | CALIFORNIA PLUMBING CODE (CPC), PART 5, TITLE 24, C.C.R. (2018 UNIFORM PLUMBING CODE WITH 2019 CALIFORNIA AMENDMENTS).   |
| 2019 | CALIFORNIA ENERGY CODE (CEC), PART 6, TITLE 24, C.C.R. 2019 CALIFORNIA FIRE CODE (CFC), PART 9, TITLE 24, C.C.R. (2018 INTERNATIONAL FIRE CODE WITH 2019 CALIFORNIA AMENDMENTS). |
| 2019 | CALIFORNIA GREEN BUILDING STANDARDS CODE, PART 11, TITLE 24, C.C.R.  |
| 2019 | CALIFORNIA REFERENCED STANDARDS, PART 12, TITLE 24, C.C.R.   |
| 2016 | ASME A17.1 (W/17.1a/CSA B44a-08 ADDENDA) SAFETY CODE FOR ELEVATORS AND ESCALATORS  |
| 2010 | ADA STANDARDS FOR ACCESSIBLE DESIGN (28 CFR PART 35 FOR TITLE II ENTITIES)   |
- CCR TITLE-19, PUBLIC SAFETY, STATE FIRE MARSHAL REGULATIONS.
- |           |  |
|-----------|--|
| NFPA 13   | INSTALLATION OF SPRINKLER SYSTEMS 2017 EDITION (CA AMENDED)  |
| NFPA 14   | INSTALLATION OF STANDPIPE & HOSE SYSTEMS 2017 EDITION (CA AMENDED)   |
| NFPA 17   | DRY CHEMICAL EXTINGUISHING SYSTEMS 2017 EDITION  |
| NFPA 17A  | WET CHEMICAL EXTINGUISHING SYSTEM 2017 EDITION   |
| NFPA 22   | NFPA 20 STATIONARY FIRE PUMPS TO FIRE PROTECTION 2016 EDITION  |
| NFPA 24   | WATER TANKS FOR PRIVATE FIRE PROTECTION 2013 EDITION   |
| NFPA 25   | PRIVATE FIRE SERVICE MAINS 2016 EDITION (CA AMENDED), INSPECTION, TESTING AND MAINTENANCE OF 2013  |
| NFPA 72   | WATER BASED FIRE PROTECTION SYSTEMS CALIFORNIA EDITION   |
| NFPA 80   | NATIONAL FIRE ALARM CODE 2016 EDITION (CA AMENDED) FIRE DOORS AND OTHER OPENING PROTECTIVES 2016 EDITION NFPA 92 STANDARD FOR SMOKE CONTROL SYSTEMS 2012 EDITION |
| NFPA 110  | EMERGENCY AND STANDBY POWER SYSTEMS 2016 EDITION   |
| NFPA 170  | STANDARD FOR FIRE SAFETY AND EMERGENCY 2015 EDITION SYMBOLS  |
| NFPA 253  | CRITICAL RADIANT FLUX OF FLOOR COVERING 2006 EDITION SYSTEMS   |
| NFPA 2001 | CLEAN AGENT FIRE EXTINGUISHING SYSTEMS 2015 EDITION  |
| CC 300    | STANDARDS FOR BLEACHERS, FOLDING AND 2017 EDITION TELESCOPIC SEATING, AND GRANDSTANDS  |
- |             |  |
|-------------|--|
| SFM 12-10-1 | POWER OPERATED EXIT DOORS                |
| SFM 12-10-2 | SINGLE POINT LATCHING OR LOCKING DEVICES |
| SFM 12-10-3 | EMERGENCY EXIT & PANIC HARDWARE          |
- |         |  |
|---------|--|
| UL 38   | MANUAL OPERATING SIGNAL BOXES 1999/2005 EDITION  |
| UL 268  | SMOKE DETECTORS FOR FIRE PROTECTIVE 2009 EDITION SIGNALING SYSTEMS                                     |
| UL 268A | SMOKE DETECTORS DUCT APPLICATIONS 1998/2003 EDITION  |
| UL 300  | FIRE TESTING OF FIRE EXTINGUISHING SYSTEMS 2005 (R2010) FOR PROTECTION OF COMMERCIAL COOKING EQUIPMENT |
| UL 305  | PANIC HARDWARE 2012 EDITION  |
| UL 464  | AUDIBLE SIGNALING DEVICES FOR FIRE ALARM AND SIGNALING SYSTEMS, AND ACCESSORIES 2003 EDITION           |
| UL 521  | HEAT DETECTORS FOR FIRE PROTECTIVE 1999 EDITION SIGNALING SYSTEMS                                      |
| UL 864  | CONTROL UNITS FOR FIRE PROTECTIVE 2003 EDITION SIGNALING SYSTEMS (W/ REVISIONS THROUGH JULY 14, 2005)  |
| UL 1971 | SIGNALING DEVICES FOR THE HEARING IMPAIRED 2002 EDITION  |
- COMPLIANCE WITH CFC CHAPTER 33, FIRE SAFETY DURING CONSTRUCTION AND DEMOLITION AND CBC CHAPTER 33, SAFETY DURING CONSTRUCTION WILL BE ENFORCED

## MORRILL MIDDLE SCHOOL



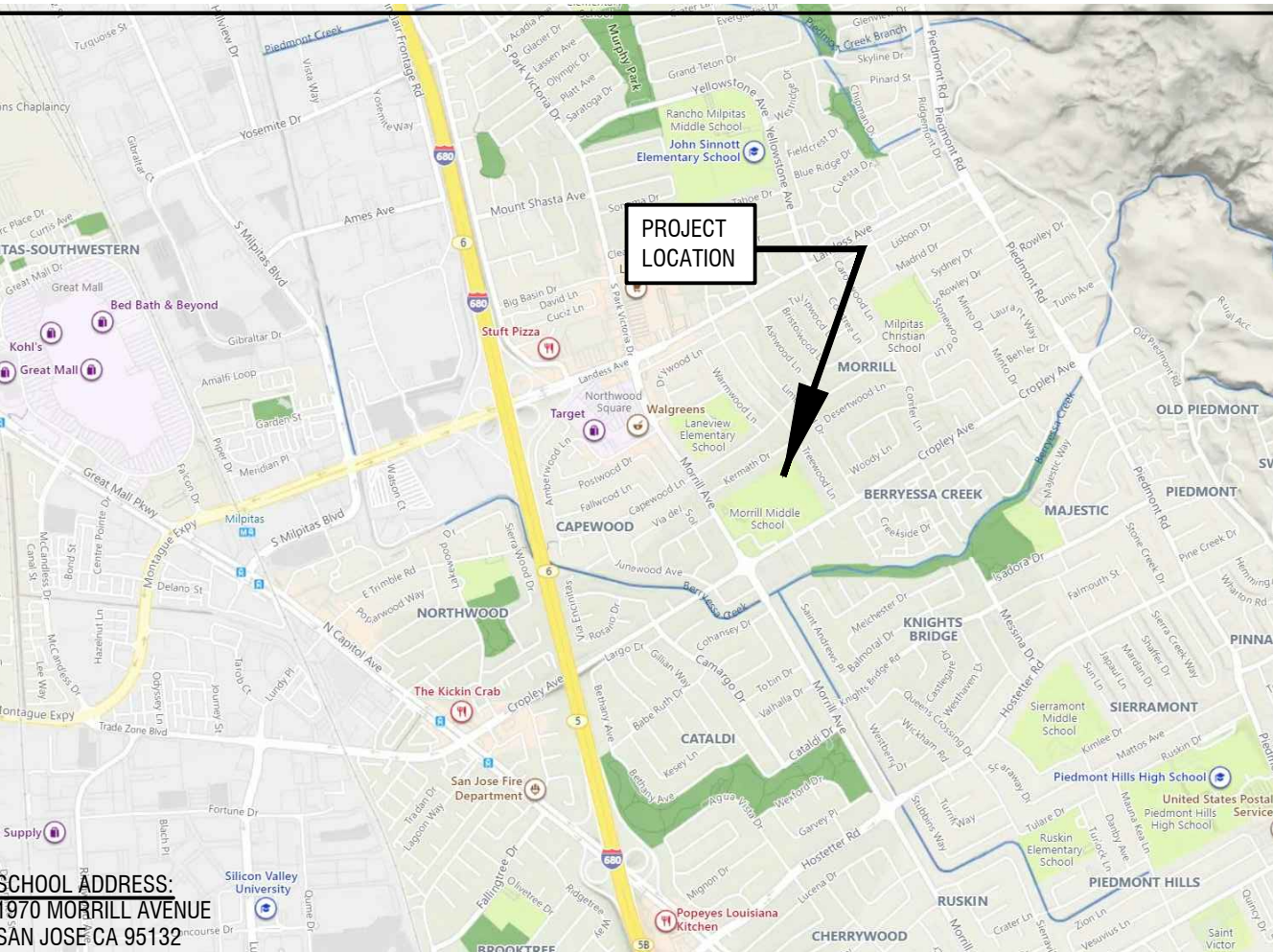
## DRAWING INDEX

- ARCHITECTURAL DRAWINGS:
- A0 TITLE SHEET
  - A1 SITE PLAN
  - A2 FLOOR PLAN
  - A3 DOOR SCHEDULE AND DETAILS
- SHEET COUNT (4)

## SYMBOLS

- |  |                        |
|--|------------------------|
|  | <b>DETAIL:</b>         |
|  | DRAWING NUMBER         |
|  | SHEET NUMBER           |
|  | <b>KEY NOTE</b>        |
|  | <b>DATUM POINT</b>     |
|  | <b>CENTER LINE</b>     |
|  | <b>REVISION</b>        |
|  | <b>REFERENCE PHOTO</b> |

## VICINITY MAP



## PROJECT DATA

**PROJECT DESCRIPTION:**

THE PROJECT CONSISTS OF

- 1) THE REPLACEMENT OF EXTERIOR DOORS.
- 2) THE REFURBISHMENT OF EXISTING DOORS.
- 3) THE INSTALLATION OF NEW DOOR HARDWARE
- 4) THE REMOVAL AND RE-INSTALLATION OF (E) DOOR HARDWARE.
- 5) THE INSTALLATION OF NEW ALUMINUM DOOR THRESHOLDS.
- 6) COORDINATION WITH OTHER CONTRACTORS WORKING ON SITE.

## PROJECT DIRECTORY

- |  |   |
|--|---|
| <b>OWNER:</b><br>BERRYESSA UNION SCHOOL DISTRICT<br>1376 PIEDMONT ROAD<br>SAN JOSE, CA 95132<br><br>T: (408) 923-1873<br>TONY KANASTAB<br>DIRECTOR OF BOND FACILITIES<br>AND MODERNIZATION<br>tkanastab@busd.net | <b>ARCHITECT:</b><br>FLATLEY DESIGN MANAGEMENT PLANNING<br>230 RADFORD DRIVE<br>CAMPBELL, CA 95008<br><br>T: (408) 466-3406<br>JOE FLATLEY<br>joe.g.flatley@gmail.com |
| <b>CONSTRUCTION MANAGER:</b><br>KITCHELL CONSTRUCTION MANAGEMENT<br><br>T: (408) 605-7240<br>JIM WILSON<br>jmwilson@kitchell.com   |   |

## STAMP



MORRILL  
MIDDLE SCHOOL  
DOOR REPLACEMENTS

1970 MORRILL AVENUE  
SAN JOSE, CA 95132

## SHEET DATA

- |             |          |
|-------------|----------|
| DATE:       | 10/14/22 |
| JOB NO.:    | -        |
| PHASE:      | BIDDING  |
| ISSUED FOR: | BIDDING  |
| SCALE:      | AS SHOWN |

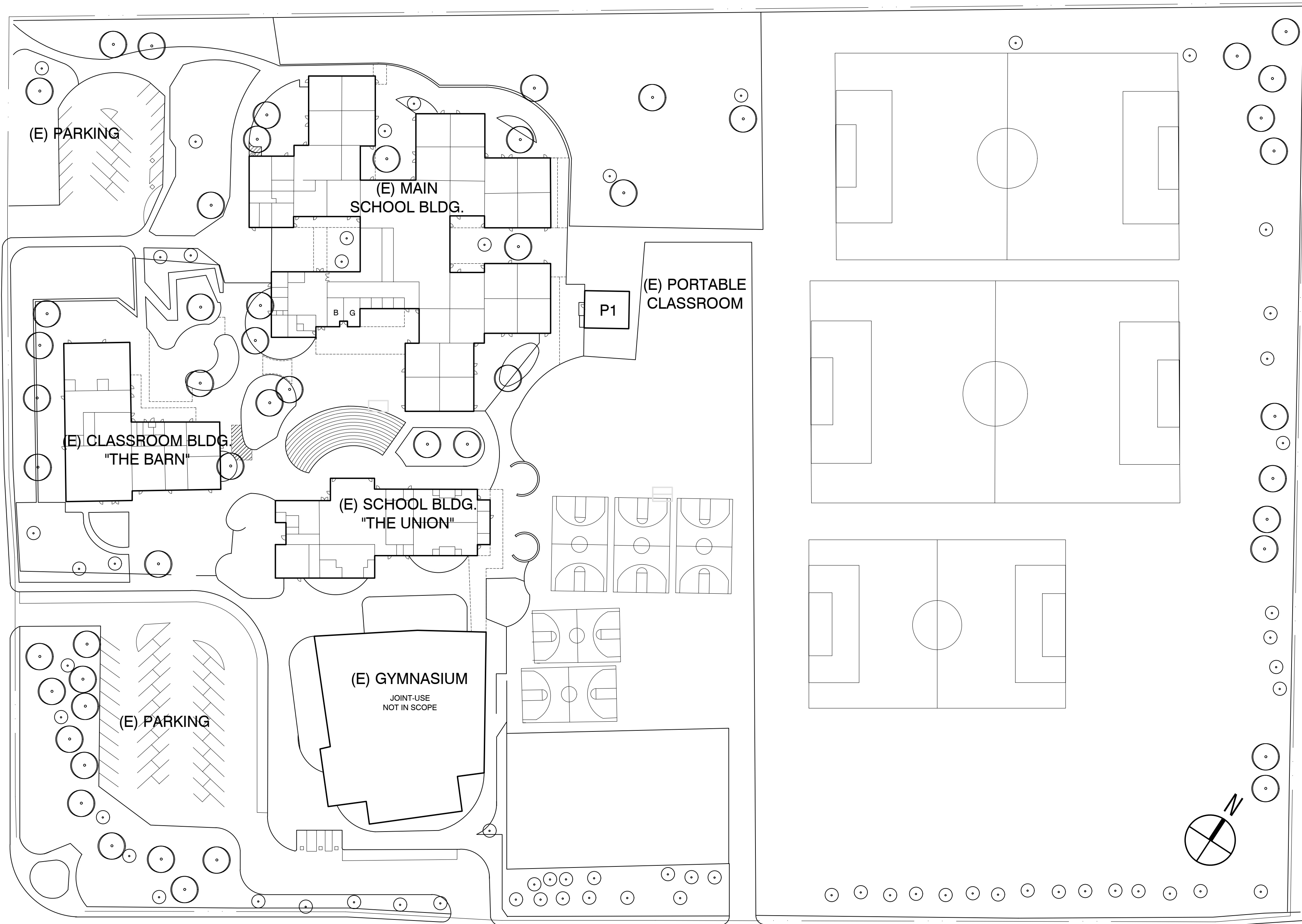
## SHEET TITLE

**TITLE SHEET**

## SHEET NUMBER

**A0**

MORRILL AVE.



1 SITE PLAN  
SCALE: 1" = 60'-0"

GENERAL NOTES

01 COORDINATE WITH CONSTRUCTION MANAGER TO DETERMINE STAGING, STORAGE, PAINTING, DELIVERY, AND STORAGE AREAS.

ARCHITECT

**FLATLEY**  
DESIGN  
PLANNING  
MANAGEMENT

STAMP



MORRILL  
MIDDLE SCHOOL  
DOOR REPLACEMENTS

1970 MORRILL AVENUE  
SAN JOSE, CA 95132

SHEET DATA

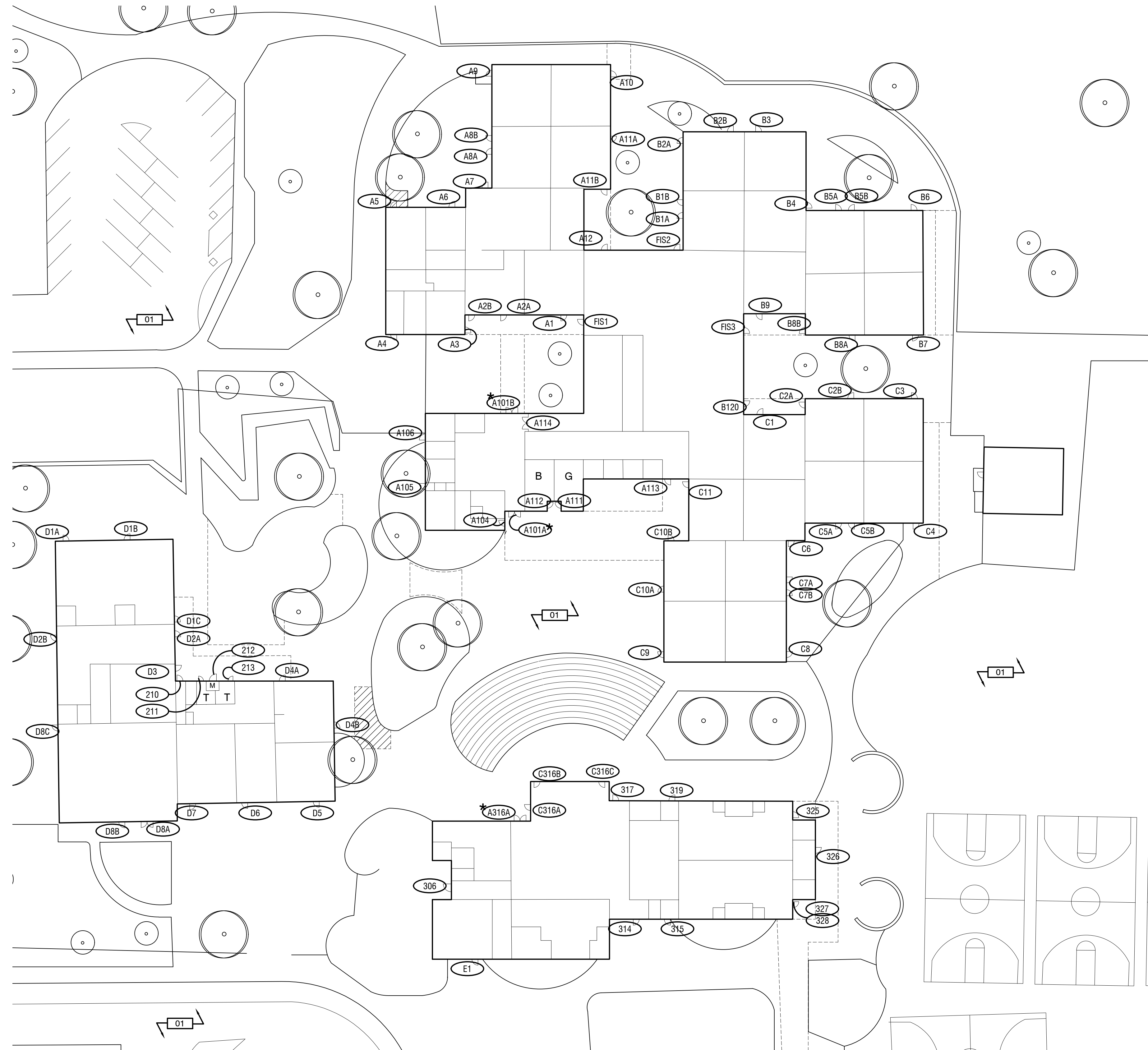
DATE: 10/14/22  
JOB NO.: -  
PHASE: BIDDING  
ISSUED FOR: BIDDING  
SCALE: AS SHOWN

SHEET TITLE

**SITE  
PLAN**

SHEET NUMBER

**A1**



1 SITE-WIDE FLOOR PLAN  
SCALE: 1" = 30'-0"

KEY NOTES

01 POTENTIAL STAGING AREA. COORDINATE STAGING AND WORK WITH CONSTRUCTION MANAGER.

PLAN LEGEND

XXX REMOVE EXISTING DOOR. PROVIDE NEW DOOR PER DOOR SCHEDULE. PROVIDE NEW ALUMINUM THRESHOLD.  
 \*XXX REMOVE EXISTING DOOR FRAME. INSTALL NEW DOOR FRAME IN EXISTING CMU WALL OPENING. REMOVE (E) IN-GROUND CLOSER. PATCH CONCRETE IN THE AREA OF WORK.

ARCHITECT

**FLATLEY**  
 DESIGN  
 PLANNING  
 MANAGEMENT

STAMP



MORRILL  
 MIDDLE SCHOOL  
 DOOR REPLACEMENTS  
 1970 MORRILL AVENUE  
 SAN JOSE, CA 95132

SHEET DATA

DATE: 10/14/22  
 JOB NO.: -  
 PHASE: BIDDING  
 ISSUED FOR: BIDDING  
 SCALE: AS SHOWN

SHEET TITLE

**FLOOR  
 PLAN**

SHEET NUMBER

**A2**

